

## F-CO<sub>2</sub>-L Series

Port connection: 1" budd-weld

Operating pressure: 160 bar

The sizing of the filter follows the optimized pressure-drop.

Recommended pressure-drop: 24 mbar

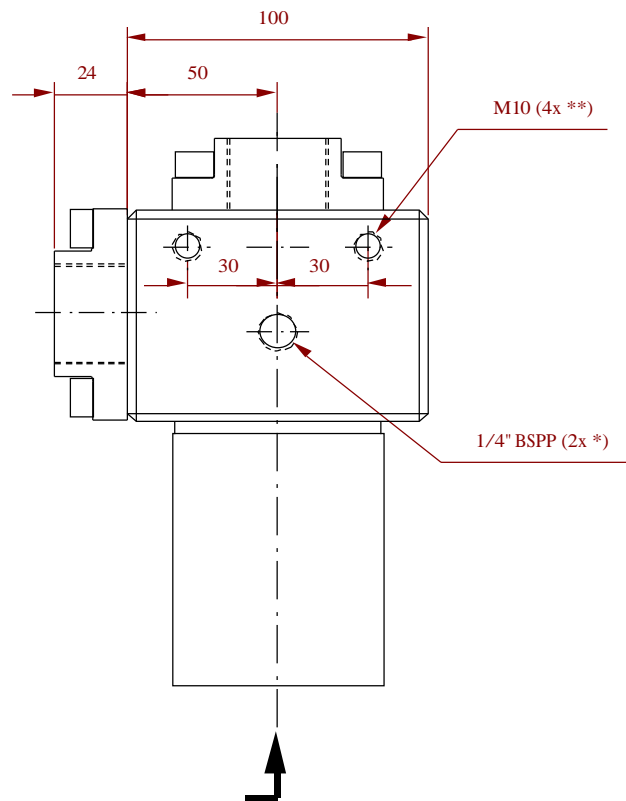
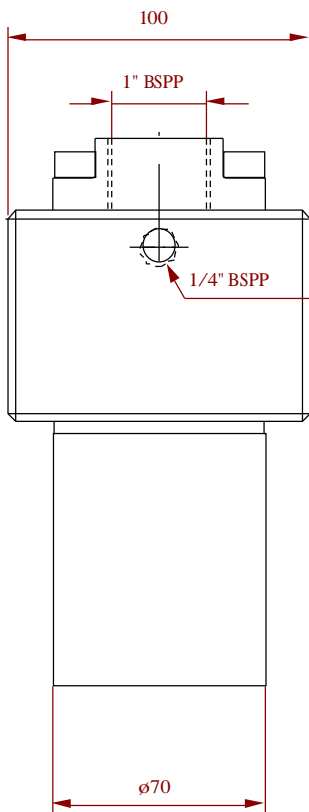
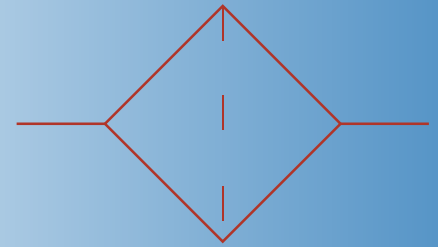
Pressure-drop during operation: 32 mbar

Max. allowable pressure-drop: 36 mbar

Flow / pressure-drop resulting thereof:

Flow in kg/h:

x	$\Delta p$ 24mbar	$\Delta p$ 32mbar
87	300	400
247	750	1000
299	900	1200



- Filter for liquid CO<sub>2</sub>
- Nominal diameter 25mm
- Materials: 1.4571 / 1.4435 / 1.4404
- Filterelement: Aerolith AE 30,
- Filtration: 30 $\mu$
- Gauge port: 1/4" BSPP  
(2x on inlet, 1x on outlet)

\* backside on same axis

\*\*2x of which on backside

DRUKON  
Druck-Kontrolltechnik GmbH  
Hauptstraße 29  
02794 Spitzkunnersdorf

Tel. +49 35842/2 76 30  
Fax +49 35842/2 76 31

e-mail: info@drukun.de  
www.drukun.de