

Spring loaded regulator for vacuum

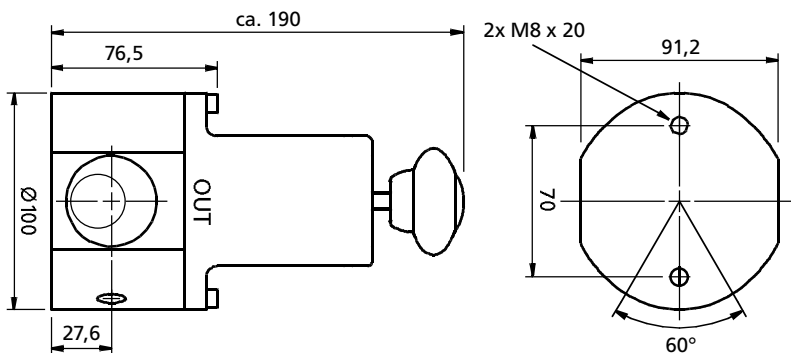
for medium and high flow applications

DV6V Series

End connections: 1 1/4" BSP
 Regulating range: -0,9 0
 (00,9)

Options:
 Gauge ports
 Cap for set-screw
 Handwheel
 Balanced poppet
 Modified for **reducing**
 absolute pressures
 Modified for standard back-pressure regulation

Documentation:
 EN 10204-2.2 standard
 3.1 B - test certificate upon request



- **Spring loaded**
- **Diaphragm sensing**
- **Materials:** POM 30GF / brass
- **Elastomers:** Buna-N, Viton, EPR
- **Seat-Ø:** 16 mm, optional 17mm
- **Mounting:** threads in valve body
- **Operating temperature:** -10°C...+70°C
- **Media:** gaseous or liquid (compatible with materials of construction)
- **Weight:** ca. 1 kg

What we would like to know:

Absolute pressure: _____ constant / changing

Regulating range called for: _____ Temperature: _____

Media: _____ Flow: _____

Application: _____

Note: We recommend filtration of fluid at approx. 25µ close before the regulator

DRUKON
 Druck-Kontrolltechnik GmbH
 Hauptstraße 29
 02794 Spitzkunnersdorf

Tel. +49 35842/2 76 30
 Fax +49 35842/2 76 31

e-mail: info@drukcon.de
 www.drukcon.de